

# Network coordinator preparation activities

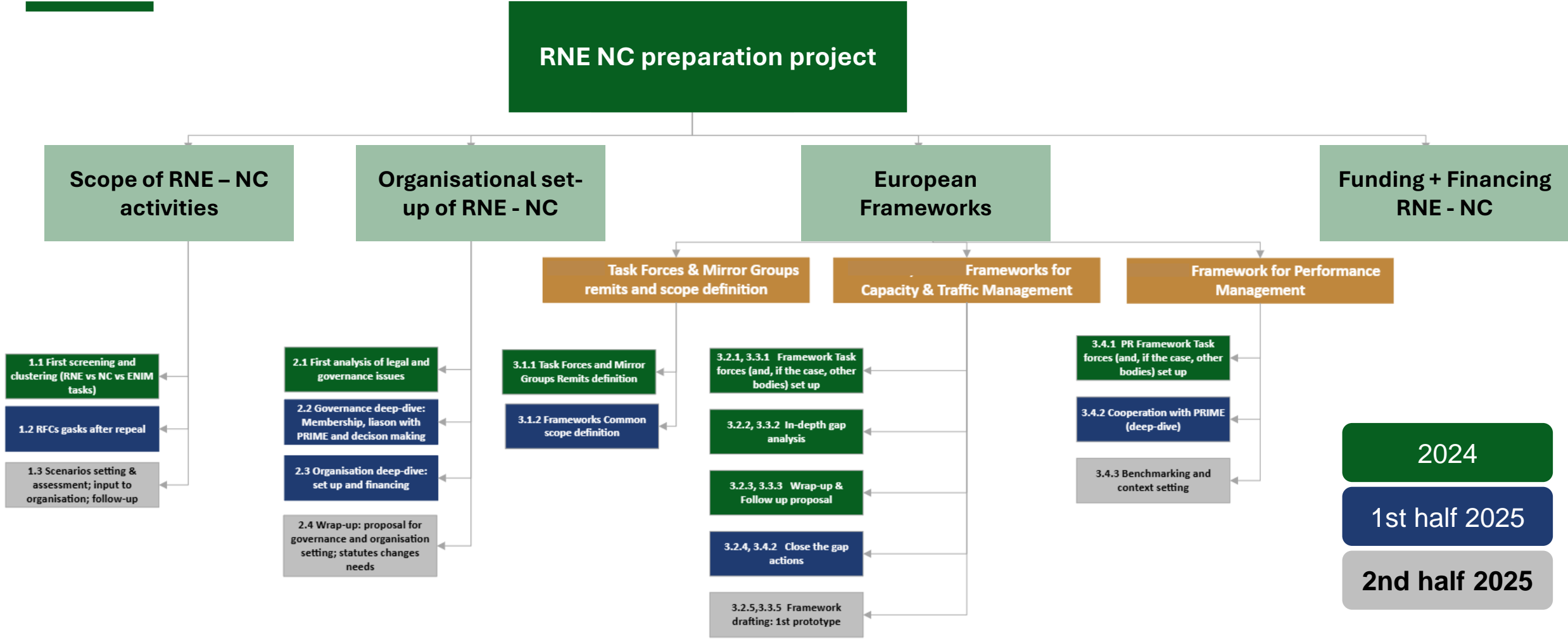


RailNetEurope

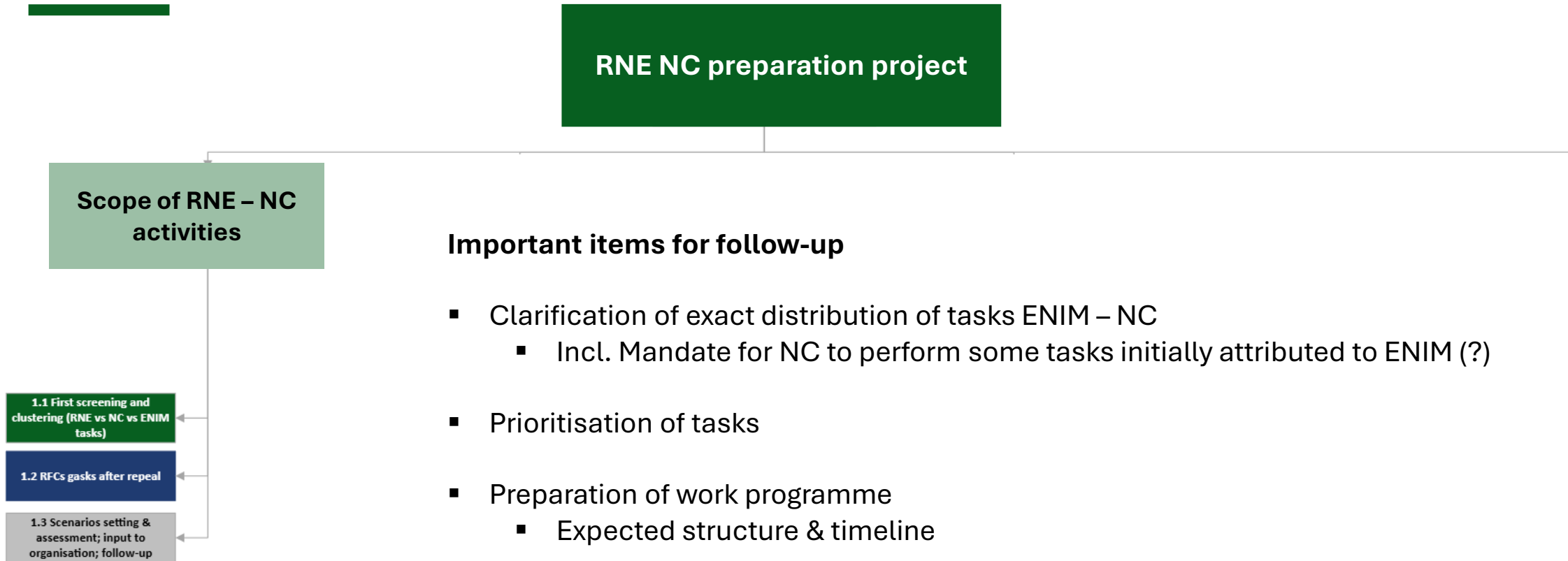
26.6.2025



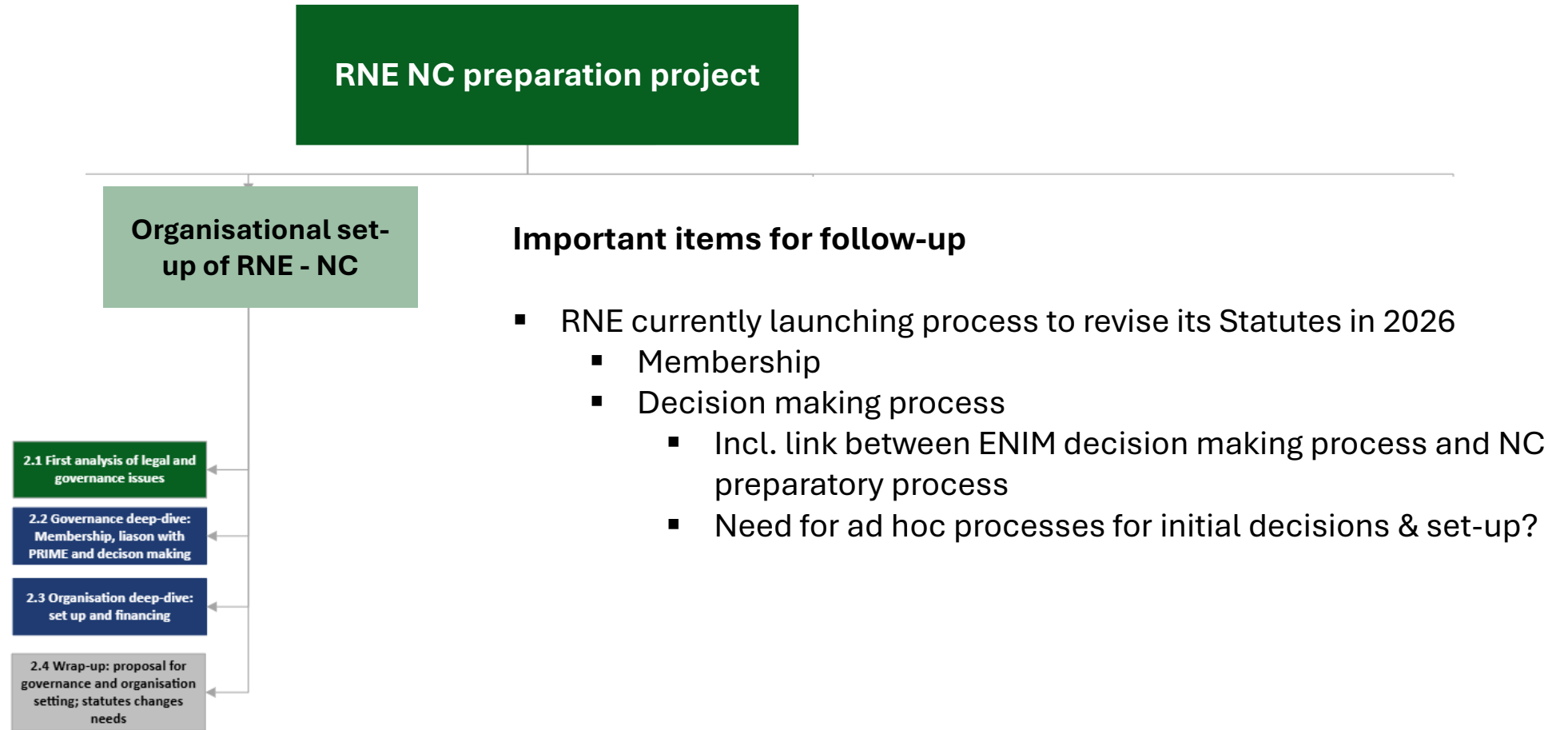
# Network Coordinator preparation project



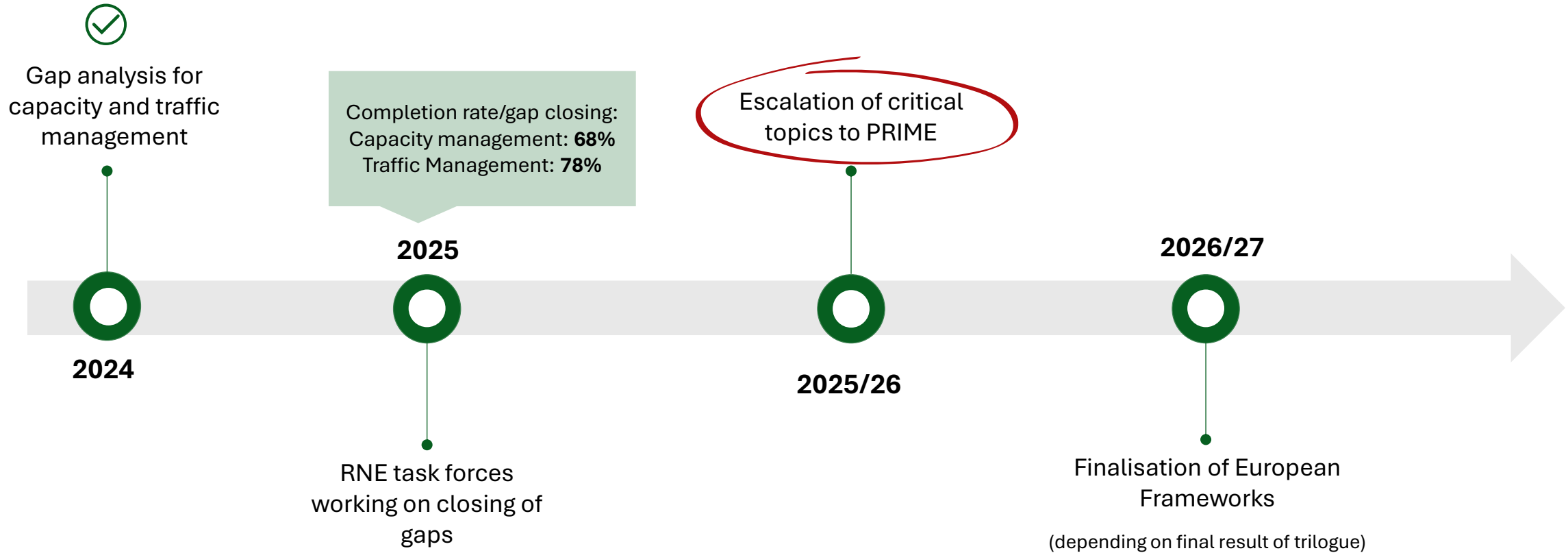
# Focus on Scope of activities



# Focus on Organisational set-up



# Focus on Preparation of European frameworks



# Scope of European Frameworks

## RNE proposal for PRIME Plenary

### European Framework

#### Main body

- # Process descriptions in **medium** level of **detail**
- # Elements being critical for harmonised implementation of process (Regulation requirements + any add ons)
- # Key information on IT requirements

#### Annexes

More detailed guidelines

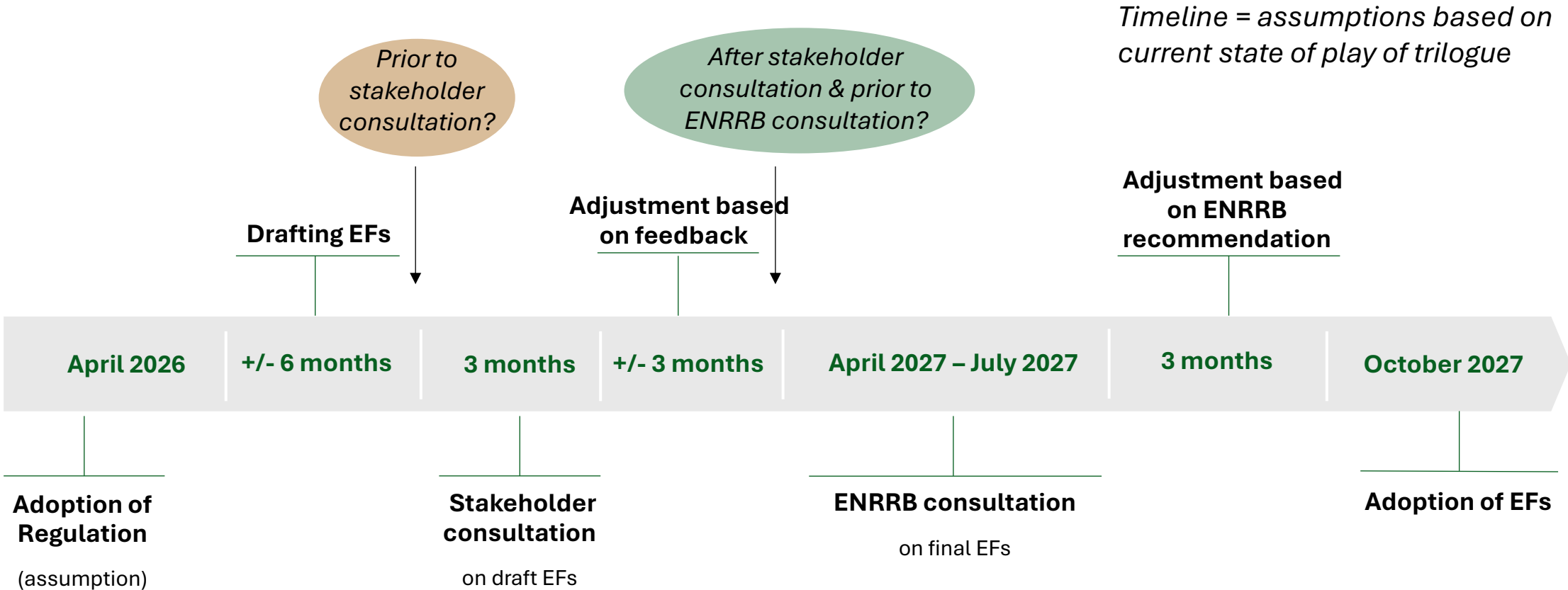
### Implementation guide

- # Guidelines or other documents that contain options
- # supplementary elements from existing handbooks/guidelines
- # IT tools' specifications

# Upcoming activities in 2025 & 2026



# Involvement of ENIM on draft & final EFs?



# Stakeholder consultation & coordination

## Clarification of roles

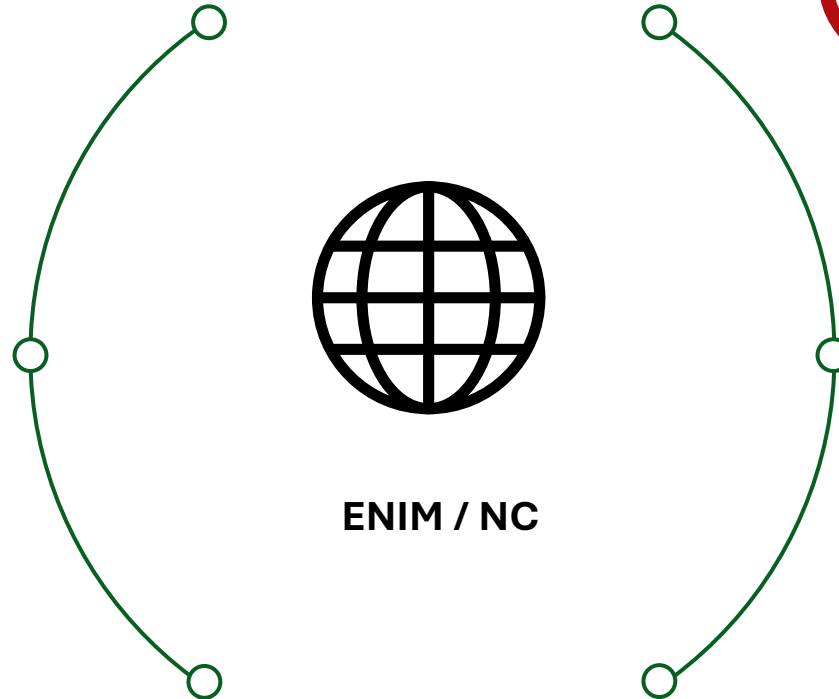
- E.g. SERAF – ENIM/NC: who is expected to address what?

## Streamlining of fora

- Streamlining of current RNE groups for stakeholder involvement required

## Piloting new formats

- E.g. ongoing consultation on draft Commercial conditions guidelines



## Arrangements with Regulators

- RNE in regular contact with RBs to prepare for implementation

## Initial vs recurrent activities

- Design of rules/processes vs. operational coordination

## Exchanges with Ministries?

- To be initiated? By whom?

# Focus on Performance review activities

---



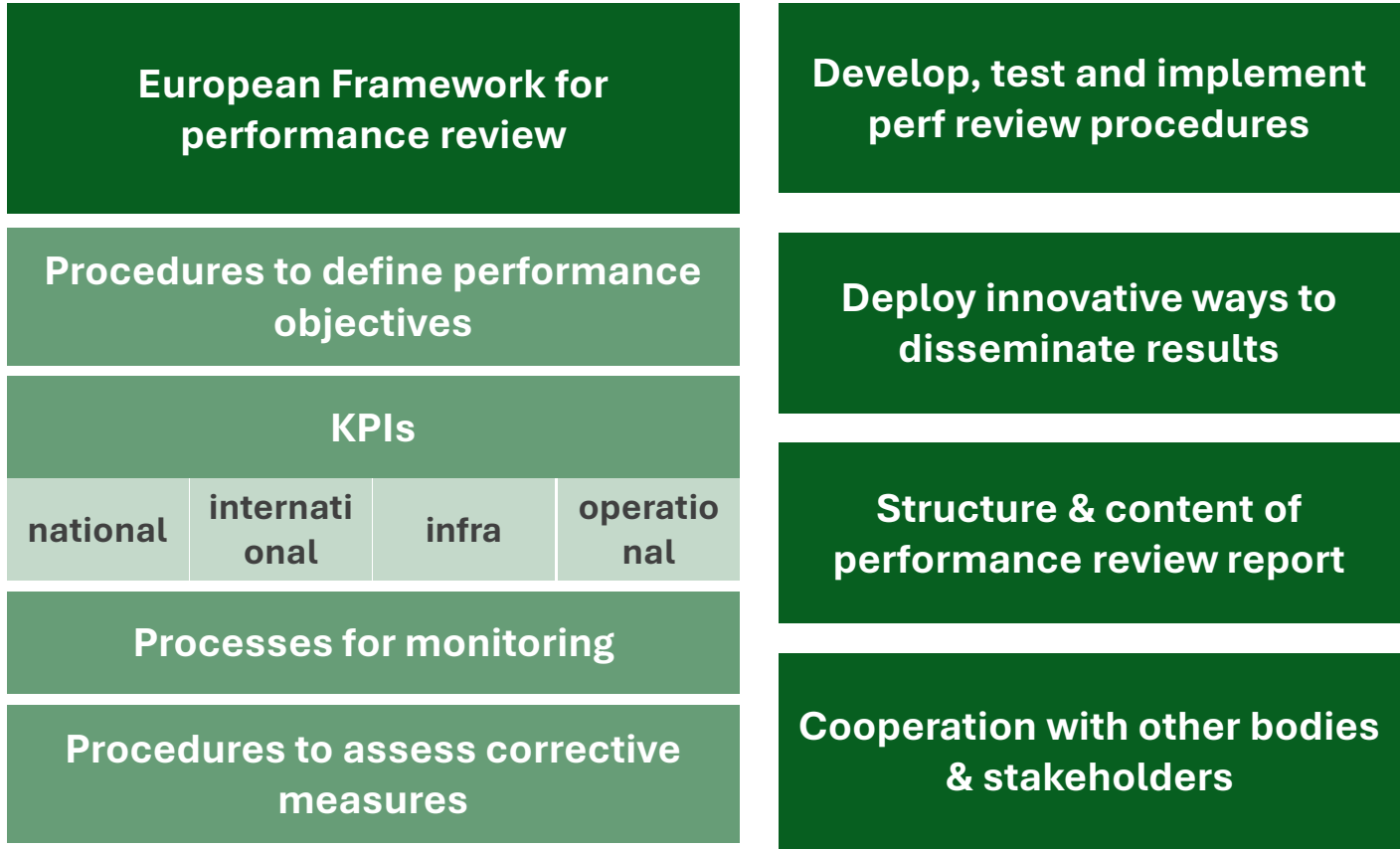
- Annual benchmarking report
- PRIME Deep dive studies



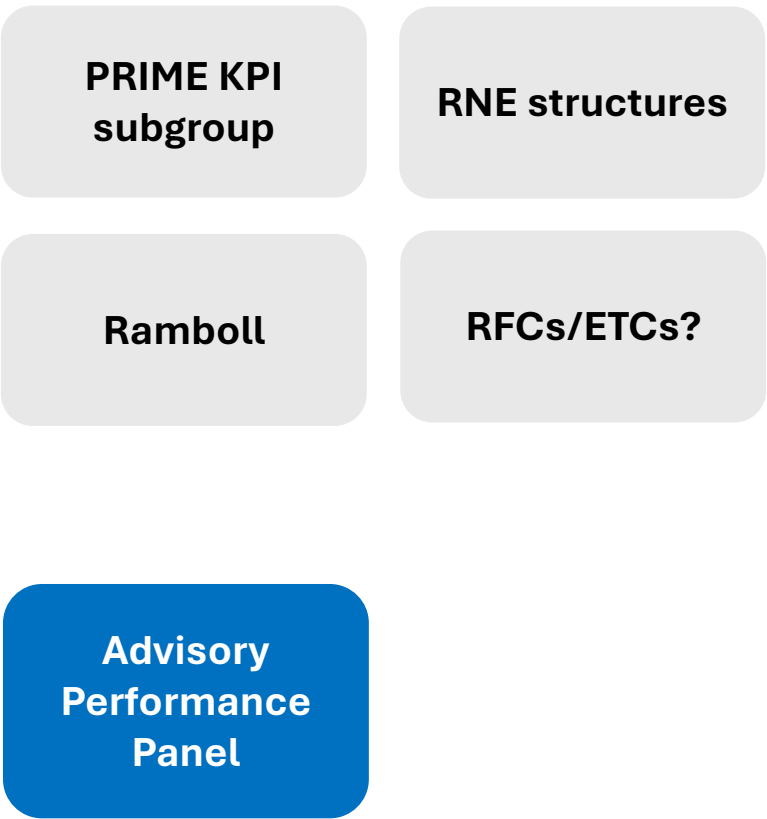
- Train performance management
- Europerformance dashboard preparatory works
- RFC KPIs
- Initial work on capacity management KPIs
- Planned activities under CEF II – Technical assistance 3

# Performance review – roles of actors?

## What we need to do



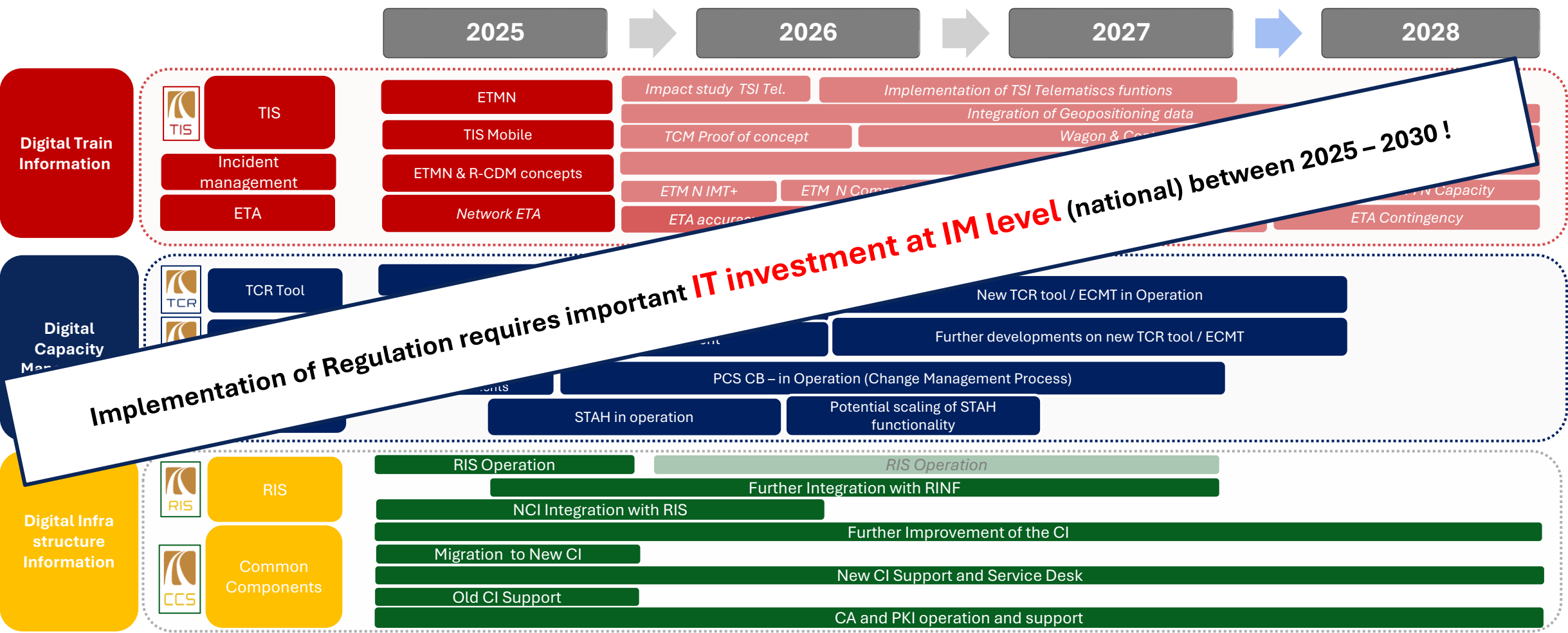
## Role of involved actors?



# Focus on Financing / RNE and its members 2025 - 2027

Scenario 1	Budget 2025	Budget Planning 2026	Budget Planning 2027	Budget Planning 2028	Budget Planning 2029
Membership Fee	€ 5 380 000	€ 5 540 000	€ 5 700 000	<b>To be worked out based on the requirements of the Network Coordinator</b> <b>FUNDING as of 2028 ?</b>	
IT – Systems and other income	€ 1 400 000	€ 1 310 000	€ 1 400 000		
EU Funding (CEF II - TA)	€ 5 250 000	€ 5 500 000	€ 5 500 000		
EU Funding (CEF I & II)	€ 2 970 000	€ 3 070 000	€ 3 200 000		
Total RNE-Budget	€ 15 000 000	€ 15 420 000	€ 15 800 000		

# Focus on IT Investment needs



RailNetEurope

# While we wait for adoption...



# ... can we (start to) implement?

## General aspects

## Comment

- Stronger IM coordination



- No legal obstacles

- 
- Stakeholder coordination



- No legal obstacles

- 
- Performance review activities



- No legal obstacles

- 
- Transport market studies



- European Transport Market Study already under preparation, coordinated by RNE

# ... can we (start to) implement?

## Capacity management

## Comment

■ Capacity strategy	✓	■ Already prepared by number of IMs under coordination of RNE; no legal obstacles
■ Capacity Model	✓	■ Already prepared by number of IMs under coordination of RNE; “partitioning” problematic in some countries
■ Timetabling	✗	■ Capacity supply with pre-planned capacity & rolling planning not possible under current legislation
■ Coordination of temporary capacity restrictions	✓	■ Annex VII implementation as suitable starting point
■ Digital tools	✓	■ Some workarounds needed as long as no sound legal basis for all CM process
■ Commercial conditions	✗	■ Some national RB decisions hampering harmonised implementation

# ... can we (start to) implement?

## Traffic Management

## Comment

- Coordination of traffic management



- European Traffic Management Network project under preparation within RNE

- Common rules for managing disruptions



- Partly already prepared under umbrella of RNE (International Contingency Management Handbook)

- Exchange of information



- Some limitations due to confidentiality issues

- Digital tools



- Train information system (TIS) tool available to support information exchange